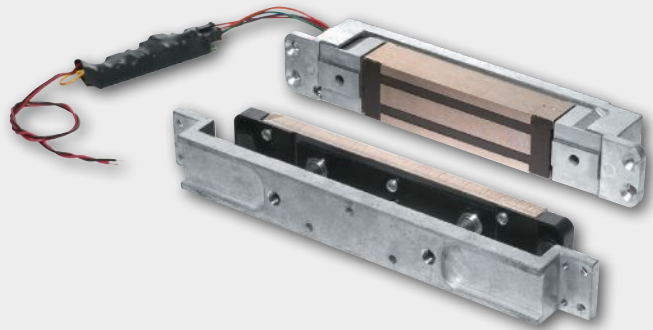




GF3000

Mortise mounted shear lock



Overview

The GF3000 Series shear lock features a patented design, offering advances over any shear lock in the market.

A microprocessor-based control module provides advanced electronic features. This circuitry automatically senses and adjusts input voltage, allowing for operation from 12 to 24 volt DC power sources.

The mortise shear lock offers the advantage of a totally concealed locking mechanism, providing superior security and appearance. The patented design incorporates locking “tabs” on the magnet assembly with mating grooves in the armature plate. The flexible mounting features allows for normal door and frame movement.

The shear lock is ideally suited for commercial grade quality hollow metal doors and frames, as well as herculite doors with top rail. Advances in design provide low operating temperatures, making this shear lock suitable for use in the growing demand for concealed locks in wood frames.

The GF3000 TRD model is available when armature adjustment is required from the edge of the door due to flush ceiling conditions. The GF3000BRD model is available when no top rail mounting is available.

Features and benefits

- Automatic voltage selection 12/24 VDC (filtered)
- 3000 lbs of holding force
- Requires filtered, regulated power supply
- Built-in automatic relock switch
- Adjustable time delay on relock, 0-30 seconds
- Low temperature operation
- Microprocessor controlled
- Optional Magnetic Bond Sensor (MBS) to monitor the secure/not secure condition of the lock
- Optional Door Status Monitor (DSM) to sense the open/closed position of the door
- UL 10C Positive Pressure Fire Tests of Door Assemblies, cUL, CSFM and MEA listed to use on fire labeled openings
- Meets ANSI/BHMA A156.23 standards

Specifications

Holding force	3000 lbs
Current draw	0.90 amp @ 12 VDC 0.45 amp @ 24VDC
Weight	7 lbs
Lock body (L x H x D)	9 1/2" x 1 1/2" x 1 1/2"
With mounting tabs (L x H x D)	11 9/16" x 1 1/2" x 1 1/2"
Armature (L x H x D)	8 3/8" x 1 3/8" x 1/2"
Armature bracket (L x H x D)	10 5/8" x 1 3/8" x 1"
Certifications	UL 10C Positive Pressure Fire Tests of Door Assemblies ANSI/BHMA A156.23 1500 lbs

Ordering information

- **GF3000** - Adjustable from top edge of door
- **GF3000TRD** - Mounting assembly which provides armature adjustable from the latch edge of the door. Recommended with zero clearance condition between top of door and ceiling.
- **GF3000BRD** - Mounting assembly to mortise armature into bottom rail of door. Magnet is installed in floor/threshold. Provides solution when no top rail is available.

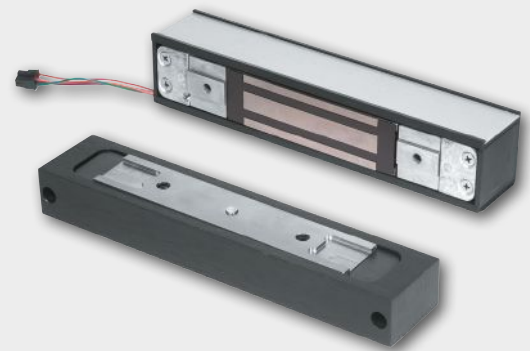
Options

- **DSM/MBS** - Door Status Monitor/Magnetic Bond Sensor



GF3000

Surface mounted
shear lock



Overview

The GF3000 Series shear lock features a patented design offering advances over any shear lock on the market.

A microprocessor-based control module provides advanced electronic features. This circuitry automatically senses and adjusts input voltage, allowing for operation from 12 to 24 volt DC power sources.

The surface shear lock offers the advantage of a totally concealed locking mechanism, providing superior security and appearance. The patented design incorporates locking "tabs" on the magnet assembly with mating grooves in the armature plate. While the strength afforded by this design is a major advantage, the flexible mounting features are as important. This design allows for normal door and frame movement.

This surface shear lock offers maximum versatility in application. The GF3000SM model provides a low profile, surface mount lock for outswinging doors. The GF3000TJ model provides a low profile, surface mount lock for inswinging doors. It provides a unique mounting solution with no brackets needed, which are standard with direct pull magnets.

The GF3000SM and TJ models feature a black anodized housing with the choice of modular finish plates.

Features and benefits

- Automatic voltage selection 12/24 VDC (filtered)
- 3000 lbs of holding force
- Requires filtered, regulated power supply
- Built-in automatic relock switch
- Adjustable time delay on relock, 0-30 seconds
- Low temperature operation
- Microprocessor controlled
- Optional Magnetic Bond Sensor (MBS) to monitor the secure/not secure condition of the lock
- Optional Door Status Monitor (DSM) to sense the open/closed position of the door
- Modular, slide-in finish plates on SM and TJ models
- UL10C Positive Pressure Fire Tests of Door Assemblies, cUL, CSFM and MEA listed to use on fire labeled openings
- Meets ANSI/BHMA 156.23 standards

Specifications

Holding force	3000 lbs
Current draw	0.90 amp @ 12 VDC 0.45 amp @ 24VDC
Weight	9 lbs
Lock housing (L x H x D)	9 13/16" x 1 7/8" x 2"
Armature housing (L x H x D)	9 13/16" x 1 1/4" x 2"
Certifications	UL 10C Positive Pressure Fire Tests of Door Assemblies ANSI/BHMA A156.23

Ordering information

- **GGF3000SM** - Standard unit (outswinging doors). Adjustable from top edge of armature. Available in special finishes.
- **GF3000TJ** - Top jamb unit (inswinging doors). Magnet mounts on inside top jamb. Adjustable from top edge of armature. Available in special finish.

Options

- **DSM/MBS** - Door Status Monitor/Magnetic Bond Sensor

Finish (for GF3000SM and GF3000TJ only)

- **628** US28 Satin aluminum, anodized (standard)
- **335** US19 Satin black, anodized
- **613** US10B Dark satin bronze, anodized
- **626** US26D Satin chrome
- **606** US4 Satin brass
- **630** US32D Satin stainless steel
- **612** US10 Satin bronze
- **625** US26 Bright chrome
- **605** US3 Bright brass