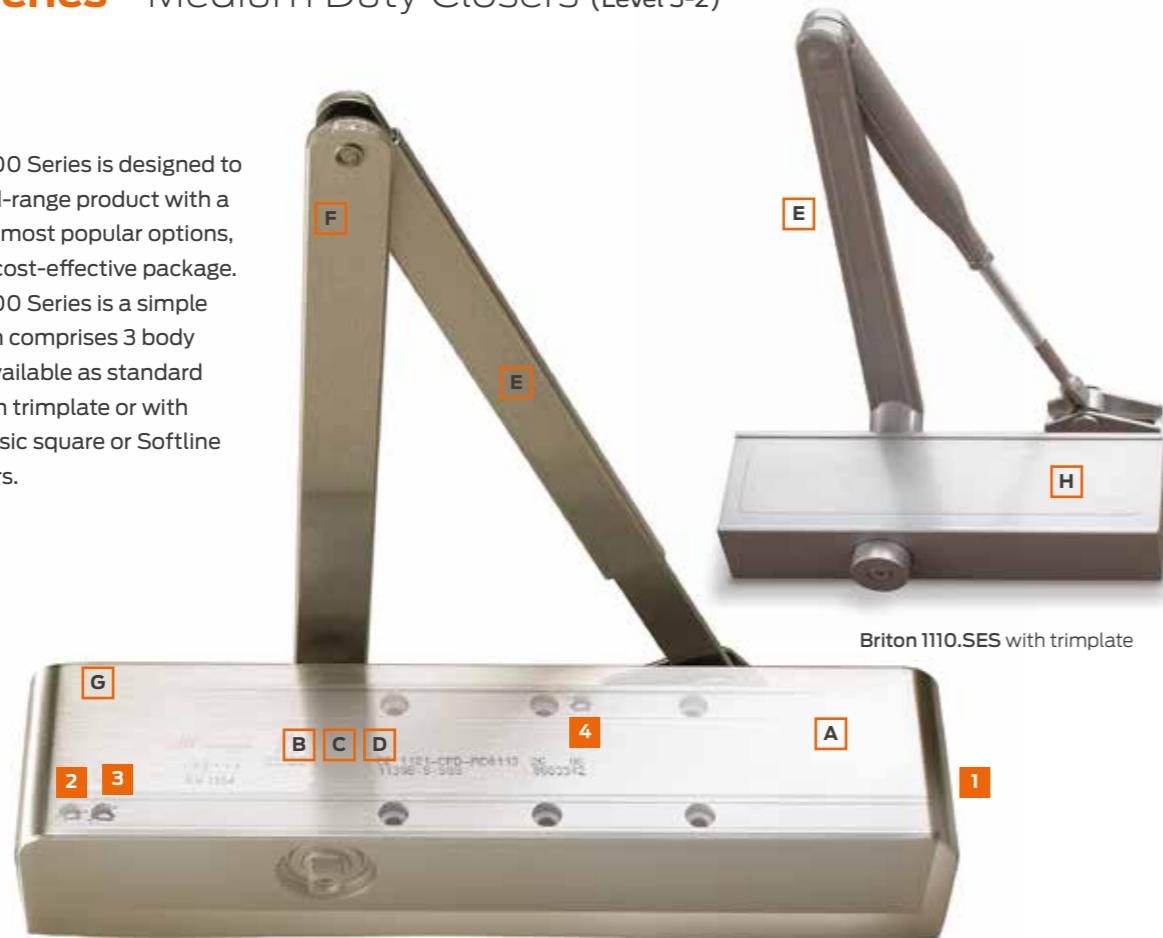




**1100 Series** – Medium Duty Closers (Level 3-2)

The Briton 1100 Series is designed to provide a mid-range product with a choice of the most popular options, in a concise, cost-effective package. The Briton 1100 Series is a simple system which comprises 3 body sizes, each available as standard with a slide-in trimplate or with optional Classic square or Softline all-over covers.



Briton 1110.SES with trimplate

Adjustments: **1** - Closing power; **2** - Closing speed; **3** - Latch action; **4** - Backcheck

A comprehensive family of closers which allows suiting across a wide range of performance variants

**Principal Features & Benefits**

- A Cast aluminium body
- B Precision needle roller bearings allied with rack and pinion mechanism provides efficient operation and high levels of durability.
- C High quality silicon chrome alloy steel used for the coil spring.
- D High quality hydraulic fluid with built-in temperature compensation ensures reliable performance without the need for seasonal adjustment
- E Screw thread armset manufactured from forged steel for additional strength and durability supplied for all trimplate variants. Simple flat arm and bracket set for all-over cover variants
- F Available with snap joint arm for quick and easy installation and future maintenance.
- G All-over cover option to conceal all fixings and adjustment screws providing a neat appearance and reducing the risk of vandalism and tampering. Available in classic square or rounded softline variants.
- H Trimplate option is a simple and cost effective means of concealing fixing and adjustment screws reducing the risk of vandalism and tampering.

The combinations of performance and cover options provides a highly comprehensive series of closers which can be suited across a wide range of functions and applications. Note: All covered variants have a flat arm as standard. All trimplate variants have screw thread arms as standard.



Briton 1120B.GES with trimplate in sprayed gold finish



Briton 1110.C.SS with Classic cover in satin stainless steel

**Testing & Certification**

- CE marked to EN1154 - AD0033 (Briton 1110)
- AD0034 (Briton 1120B)
- AD0113 (Briton 1130B)

CE marked to EN1155 for electromagnetic hold-open variants  
Fire tested to EN1634 on timber doors to achieve a 2 hour fire rating, and 4 hours for metal doors  
Certifire Approved CF388

Full Declaration of Performance available from our website at:

[www.doorhardware-online.co.uk](http://www.doorhardware-online.co.uk)

**What's in the box?**

- Closer Body
- Body Cover/Trimplate
- Tri-Pack Armset and Brackets
- Fixing Pack
- Installation Instructions



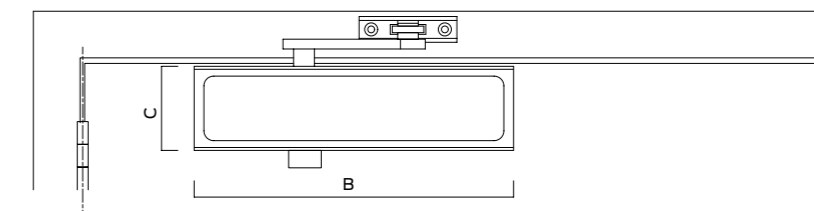
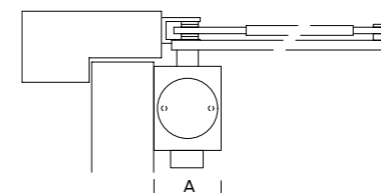
Electromagnetic hold-open variant is available in trimplate or with all-over Softline cover



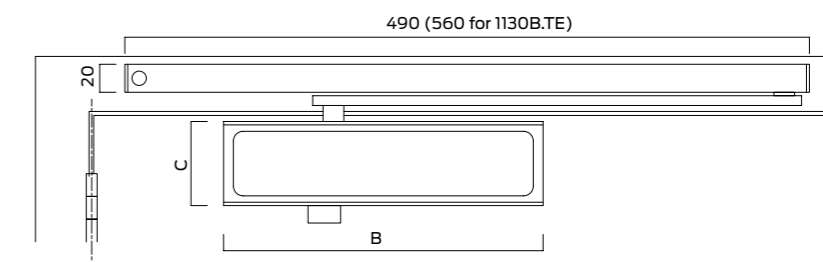
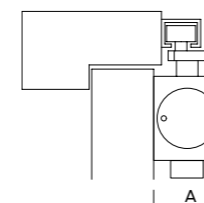
### Features of the Briton 1130B.TE closer

- Fully compliant with EN 1155
- Satisfies the requirements of Approved Document M
- Fail safe electronics guarantee door release in the event of a fire or power failure
- Track mounted 24v DC electromagnet with an effective and reliable holding force
- Manual override allows the door to be pulled closed at any time
- On-board test switch simulates fire condition
- Fully adjustable hold-open angle from 75° to 110°
- 24v transformer/rectifier available

Closer with projecting arm & trimplate



Closer with track arm & trimplate



	1110	1110.T	1120B	1130B	1130B.T	1130B.TE
A	38.5	38.5	38.5	48	48	48
B	207	207	236	257	257	257
C	60	60	60	60	60	60

### Briton 1130B.TE Electro-magnetic hold-open

An electromagnet in the slide track is designed to hold the door open during normal use and is connected to the building fire alarm system. On sounding the fire alarm, or in the event of power failure, the electromagnet is deactivated and releases the door closer mechanism to close the door in the normal controlled manner.

It is particularly suited for use in areas where a standard door closer could be inconvenient or would impede the flow of people in medium or high traffic applications such as a cinema foyer or hospital corridor.

The use of electro-magnetic hold-open door controls are recommended in applications which are designed to meet the levels of accessibility called for in Approved Document M Access to and use of buildings.

### Additional features

Optional mechanical hold-open unit can be used to replace the standard armset on projecting arm closers or retrofitted into the slide track. Hold-open angle can be adjusted from 80° to 120° and allows the door to be manually released from the hold-open position.

**Mechanical hold-open must not be used on fire and smoke doors.**



Mechanical hold-open armset option for projecting arm variants



Mechanical hold-open conversion kit for slide track variants



## 1100 Series - Quick Selector

Product features		Product references				
EN Closer size	max. door size [width - weight]	1110	1120B	1130B	1130B.T	1130B.TE
1	750mm - 20kg					
2	850mm - 40kg	■	■	■	■	
3	950mm - 60kg	■	■	■	■	■
4	1100mm - 80kg	■	■	■	■	■
5	1250mm - 100kg			■		
6	1400mm - 120kg			■*		
CE marked		■	■	■		■
Fixed closing power EN size						
Adjustable closing power EN size		2 - 4	2 - 4	2 - 6*	2 - 4	3 - 4
Maximum angle of opening (controlled closing)		105°	180°	180°	180°	105°
Adjustable closing speed & latch action		■	■	■	■	■
Adjustable backcheck			■	■	■	■
Tri-pack armset (projecting arm closers)		■	■	■		
Mechanical hold-open facility		□	□	□	□	
Electro-magnetic hold-open						■
Slide channel and arm					■	■
Trimplate cover option		■	■	■	■	■
All over cover variants available	all variants available with C (classic) / S (softline) cover options					
Finishes	SE; SES; GES (trimplate variants) - SES; GES; SSS; PSS; PBS (all covered variants)					
Guarantee period		10yrs	10yrs	10yrs	10yrs	10yrs
<b>CE Classification</b>		382-4113	482-4113	482-6113	482-4113	383-4113

■ Feature as standard □ Available as an option

Briton 1110.SES closer with standard trimplate in SES finish



Briton 1120B.C.SSS closer with Classic cover in Satin stainless steel with matching arms.



Briton 1120B.S.SSS closer with Softline cover in Satin stainless steel with matching arms.

## A wide choice of cover and finish options



Product Ref:	Description	Cover Option	Finishes
<b>1110</b>	Projecting arm closer - template adjustable EN 2 - 4	Trimplate	SE; SES; GES
<b>1110.C</b>	Projecting arm closer - template adjustable EN 2 - 4	C cover	SES; GES; SSS; PSS; PBS
<b>1110.S</b>	Projecting arm closer - template adjustable EN 2 - 4	S cover	SES; SSS; PSS; PBS
<b>1120B</b>	Projecting arm closer - spring adjustable EN 2 - 4 - with backcheck	Trimplate	SES; GES
<b>1120B.C</b>	Projecting arm closer - spring adjustable EN 2 - 4 - with backcheck	C cover	SES; SSS; PSS; PBS
<b>1120B.S</b>	Projecting arm closer - spring adjustable EN 2 - 4 - with backcheck	S cover	SES; SSS; PSS; PBS
<b>1130B</b>	Projecting arm closer - spring adjustable EN 2 - 6 - with backcheck	Trimplate	SE; SES; GES
<b>1130B.C</b>	Projecting arm closer - spring adjustable EN 2 - 6 - with backcheck	C cover	SES; SSS; PSS; PBS
<b>1130B.S</b>	Projecting arm closer - spring adjustable EN 2 - 6 - with backcheck	S cover	SES; SSS; PSS; PBS
<b>1130B.TE</b>	Track arm electromag hold-open closer - spring adjustable EN 3- 4 - with backcheck	Trimplate	SES; GES
<b>1130B.TE.S</b>	Track arm electromag hold-open closer - spring adjustable EN 3- 4 - with backcheck	S cover	SES; SSS

Product Ref:	Accessories & Parts	Finishes
<b>1110.AP</b>	Arm pack (screwthread) for 1110 & 1120B trimplate closers	SE
<b>1110.APF</b>	Flatform arm pack	SE; SS; PB
<b>1110.APH</b>	Hold-open arm pack for projecting arm closers	BM; GE; SE
<b>1110.BRK66</b>	Fig. 66 bracket pack	SE
<b>1110.FP.ZP</b>	Fixing pack	SE
<b>1130.AP</b>	Arm pack (screwthread) for 1130B trimplate closers	SE
<b>1130.APF</b>	Flatform arm pack for 1130B	SE; SS; PS; PB
<b>1130.APH</b>	Hold-open arm pack for projecting arm closers	BM; SE
<b>1130.F.PLT</b>	Fixing plate	BM; SE; WHS
<b>1130.HP</b>	Hold-open conversion kit for slide track closers	N/A
<b>1130.TPB</b>	Trimplate	SE