



Legge®

Lockmakers since 1881



5 Lever Insurance Approved Security Deadlock

64mm and 76mm

CERTIFIED TO THIEF RESISTANT BRITISH STANDARD 3621: 2004.

- This product range has 1000 key variations.
- Steel case with integral hardened steel anti-drill plate on cap and case.
- 5 close gated levers with built-in anti-pick device.
- Strong, steel box locking plate.
- Easy fit replacement for most mortice locks of the same overall width.
- Rebated conversion sets available 13mm & 25mm No. 41.
- Keyhole aperture protected by internal curtain.
- Steel, plated, unnumbered keys.
- The box locking plate is constructed from STEEL to resist attack and to meet the requirements of British Standard BS3621: 2004 for Thief Resistant Locks.

FITTING INSTRUCTIONS

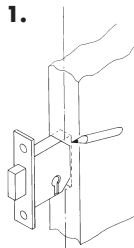
TEMPLATE ON REVERSE

Fire Door Installation:

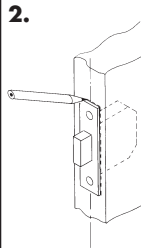
Please note: When installing this product to an EN 1634 compliant Timber based Fire Door the lock case must be bedded on an Intumescient Seal, 1mm thick to ensure that the door integrity is maintained in a fire situation.

1. Place the lock against the door edge at the selected position. Mark a central vertical line on the door edge where the lock is to be fixed and draw two further vertical lines on the door edge equal about the centre line to define the mortice which needs to be 19mm wide and 80mm high. The mortice should be drilled and cleaned out to a depth **Y**.
2. Insert lock into door with loose forend held in position, mark around forend, remove lock and recess door 4.5mm deep to allow flush fitting.
3. Place template on door ensuring it is correctly aligned with the forend mortice and mark keyhole with a small bradawl. Mark a second hole 10mm below the first. Both points should be **X** from the door edge. Drill through the door at both points using a 10mm drill.
4. Remove all chippings from the mortice and insert lock into door with the loose forend in position. Fix with two No. 8 screws provided. Check operation of lock. Insert a key through the escutcheons and into the lock. Mark the fixing positions and screw the escutcheons to the door using the four 10mm x 3 screws provided.
5. With the bolt shot out, move the door till the bolt touches the frame and mark the position of the bolt top and bottom on the frame. Draw two horizontal lines equal about the bolt position 48mm apart. Measure the distance from the bolt **centre** to the door's closing face and mark this dimension from the door stop on the frame (see dimension **A** on Fig. 1). Draw two vertical lines 20mm apart central about this line. Mortice out to accept the locking plate box to a depth of 22mm.
6. Position the locking plate box in the mortice, draw round the plate and cut out to a depth of 2.5mm. Mark the four fixing holes, countersink as necessary and fix with two of the four No. 10 screws provided.
7. Check operation of the lock with the door closed. Adjust position of the locking plate if necessary and complete fixing with the remaining screws.

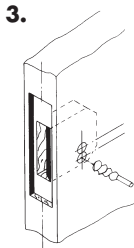
1.



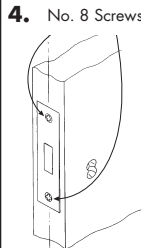
2.



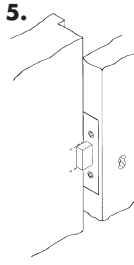
3.



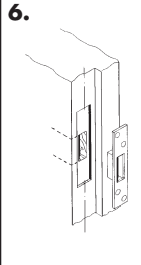
4. No. 8 Screws



5.



6.



FOLD ALONG
DOOR EDGE
FOR 64mm
LOCK

FOLD ALONG DOOR
EDGE FOR 76mm
LOCK

TOP

10mm

Ø10mm

'X'

'X'

'Y'

LOCK SIZE	DIM. 'X'	DIM. 'Y'
64mm	44.5mm	67mm
76mm	57mm	80mm

DOOR STOP

CLOSING FACE

A

g

Fig. 1

