

INSTALLATION INSTRUCTIONS.

BRITON 999 FIRE STAY 24V. DC

TYPE B

REF. No. 0999/114



IMPORTANT:— Do not use installation instructions in closer carton.
Fixing details for the closer are included in this instruction sheet.

Type 'B' fire stay is fixed to the headframe on the 'push' side of door. It is designed to operate with a Briton 2003, 2004 or 2005 overhead door closer (application 66) allowing the door to open to 90°. The door must close tightly into its frame from the fully open position. Dimensions shown for fixing fire stay and closer apply to doors hung on normal butt hinges. If projecting butt hinges are used please send details to enable suitable fixing instructions to be issued.

APPLICATION

Overhead closer fixed to 'push' side of door.
Fire stay unit fixed to face of head frame.

See Diagram 1

The depth of headframe recess is important.

See Diagram 7

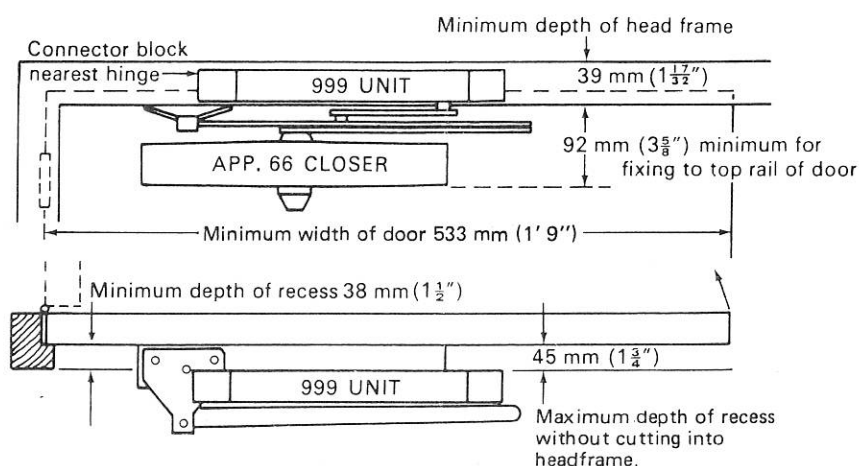


Diagram 1

GENERAL NOTES

The following parts will be in the fire stay carton:—

- 1 unit
- 1 set of arms
- 1 arm retaining screw
- 1 arm retaining washer
- 1 slide block with retaining washer and circlip
- 4 No. 10 pozidriv Rnd. Hd. woodscrews 1 1/2" long
- 1 fixing instruction

See Diagram 2

Arms for new or existing closer must be replaced by the special arms included with the fire stay.

Surplus arms are not returnable.

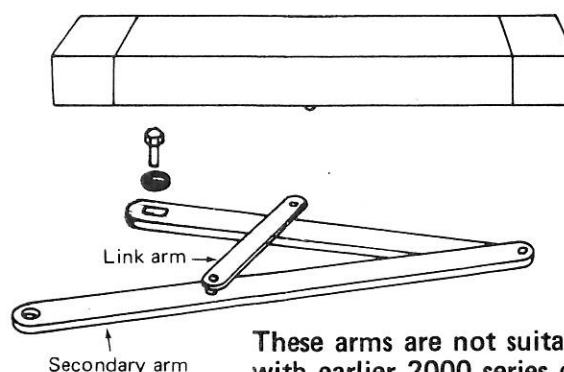


Diagram 2

These arms are not suitable for use with earlier 2000 series closers that have the main arm secured to the spindle by a cross screw.

Existing closer must be temporarily removed, then re-fixed in accordance with the following installation instructions.

A door stop should always be used to prevent the door opening beyond the limit of the 999 unit.

Remove end covers from the unit and check

- (a) That the voltage indicated on the label fixed to the connector block is consistent with the D.C. supply voltage to be used.

See Diagram 3

- (b) That the unit is the correct hand, i.e. the end angle fixing bracket with the connector block must be nearest the door hinge.
The hand of the unit can be altered at site.

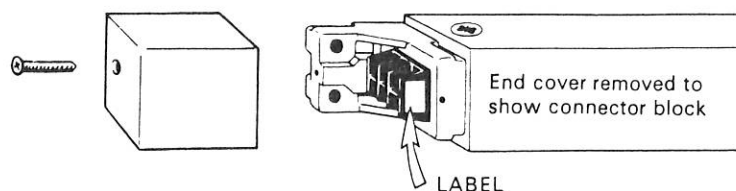


Diagram 3

To alter hand of unit remove retaining screws.

Turn end brackets.

Replace retaining screws and securely tighten.

See Diagram 4

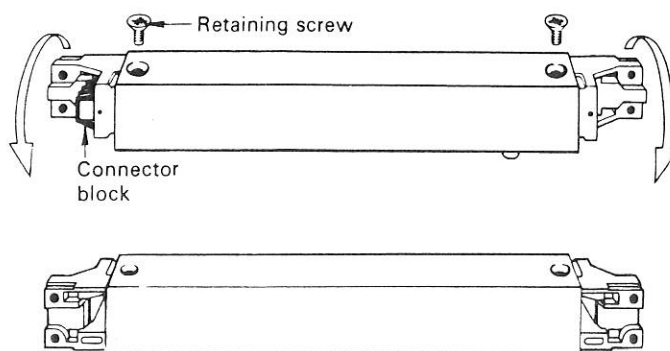


Diagram 4

Replacing end covers

Slide end covers on to end angle fixing brackets as shown at A and secure with self tapping screws supplied, or if desired, fit covers as shown at B.

If the unit is recessed into head frame, end cover must be fitted as shown at B.

See Diagram 5

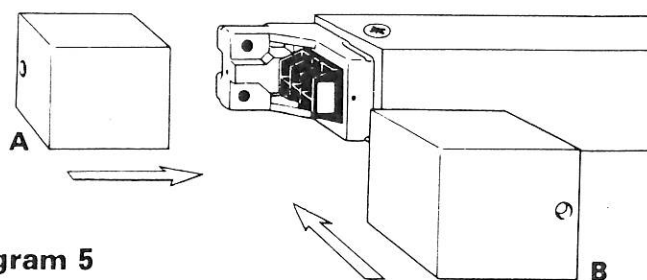


Diagram 5

Testing

It is important that the equipment is tested when first installed to prove that it functions correctly.

Pass electrical installation notes on to builders site agent.

Under no circumstances should the door closer be dismantled unless specialist tools are available.

INSTALLATION INSTRUCTIONS.

Page 3

Note:— An existing closer should first be removed from the door.

Arms must be removed from the closer proceeding as follows:— Unscrew arm retaining screw. Remove washer and ease arm off spindle.

See Diagram 6

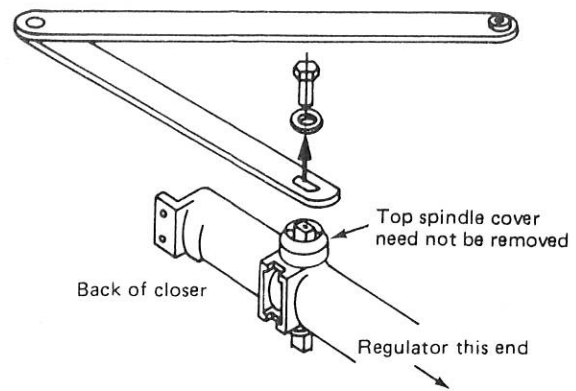


Diagram 6

FIXING THE FIRE STAY UNIT

If the depth of recess exceeds 45 mm ($1\frac{3}{4}$ ") arrangements should be made with electrical contractor regarding wiring which could be done before fixing the unit.

Ensure that the unit is level and flush with the underside of head-frame.

Fix with 4-No. 10 Pozidriv Rnd. Hd. woodscrews $1\frac{1}{2}$ " long.

See Diagram 7

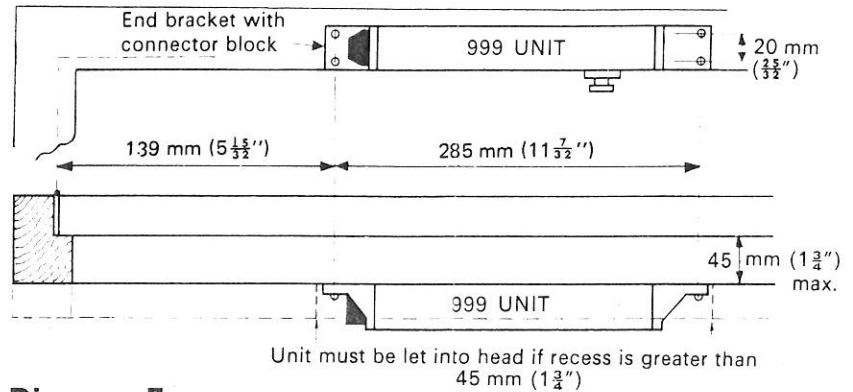


Diagram 7

Fit end covers to unit.

See Diagram 5

FIXING THE DOOR CLOSER

The closer is self-handing but the arm must be fitted to the correct end of the spindle to suit the hand of door.

This is determined by placing the closer on the 'push' side of the door with the regulator nearest the hinge.

See Diagrams 8 and 9

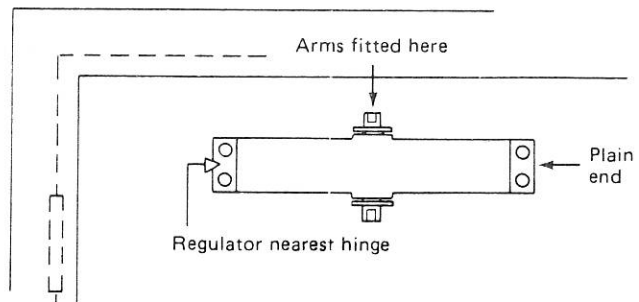


Diagram 8

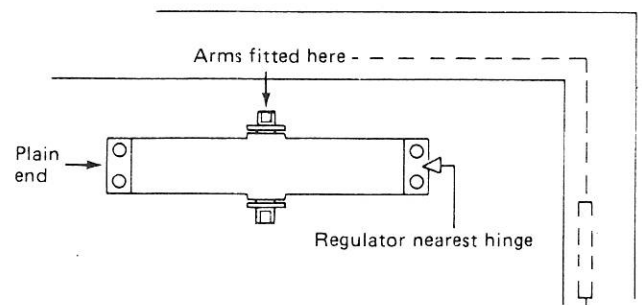


Diagram 9

Fitting arm from fire stay carton on to closer spindle:—

With the secondary and link arms uppermost, press main arm onto spindle.

Secure firmly with the new washer and screw.

See Diagram 10

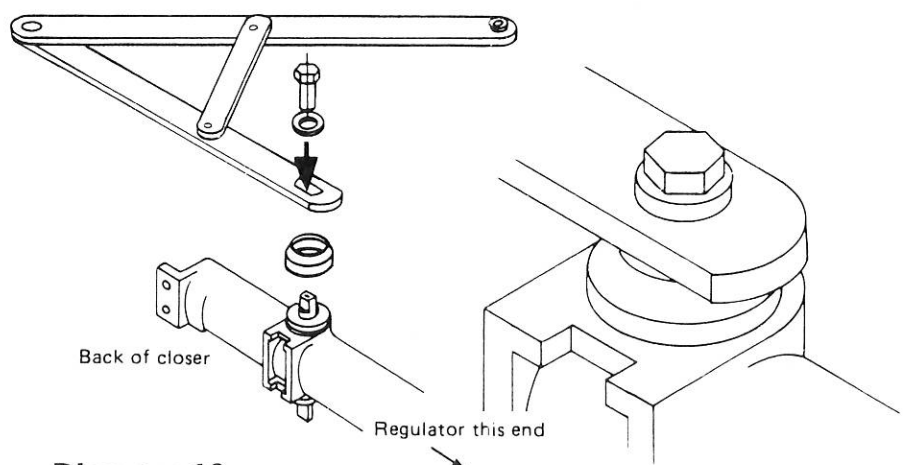


Diagram 10

ELECTRICAL INSTALLATION

BRITON 999 FIRE STAY

24V. DC



Before making connections ensure that the supply voltage is consistent with the voltage indicated on the label fixed to the connector block.

See Diagram 2

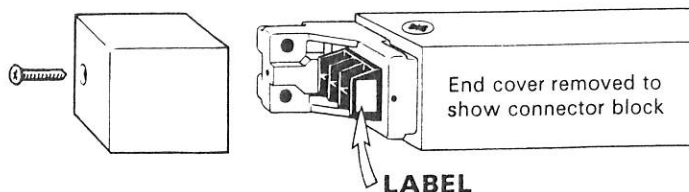


Diagram 2

SPECIFICATION

Holding type magnet LM4.
Windings epoxy resin impregnated and encapsulated.
Continuously rated.
Voltage 24V d.c. Nominal, 30V d.c. Maximum.
Power input 1.7 watts } Maximum Requirement
Current 71 mA } at 24V d.c.

WIRING

For concealed wiring, gain access from rear of fire stay.

For surface wiring, knock-out panels are provided in end cover.

Note: End cover drilled to order when connecting to pyrotechnic cable, see Drg. No. A2509.

FUNCTION

When energised, the electro magnet will retain the door in a "hold open" position against the door closer spring power.

De-energising the electro magnet by switching off or failure of electric supply allows the door to close by the door closer spring power.

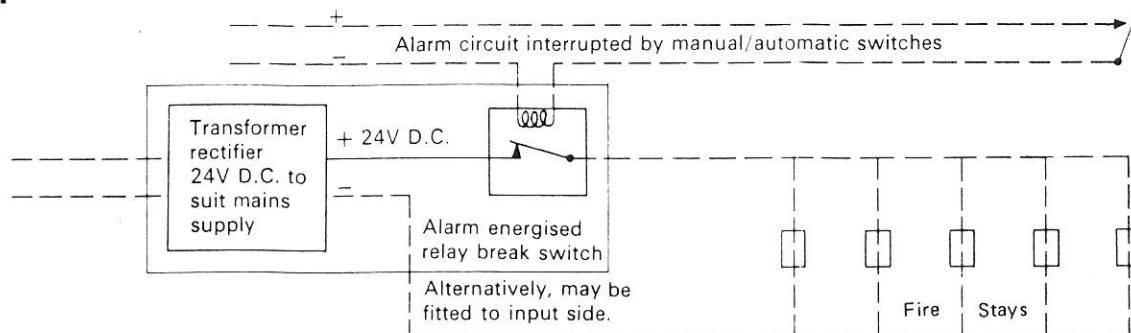
TESTING

After installation, make a check on the voltage at each Fire stay to confirm that the voltage is constant between 22V and 30V.

It is important that the equipment is tested when first installed for correct function and thereafter, at weekly intervals in accordance with the Fire Precautions Act 1971, Fire Certificate schedule 2.

Results of the tests should be recorded. This is based on recommendations contained in Home Office fire circular 29/1973.

TYPICAL WIRING DIAGRAM



AN EARTHING TERMINAL IS PROVIDED FOR USE BY THE INSTALLER.

FIXING THE DOOR CLOSER

contd.

Page 4

Wedge door open.
Ensure that closer is level.
Fix with 4-No. 10 Pozidriv Csk. Hd. woodscrews $1\frac{1}{4}$ " long.
Securely fix arm bracket with 3-No. 12 Pozidriv Csk. Hd. wood-screws $1\frac{1}{4}$ " long.

See Diagram 11

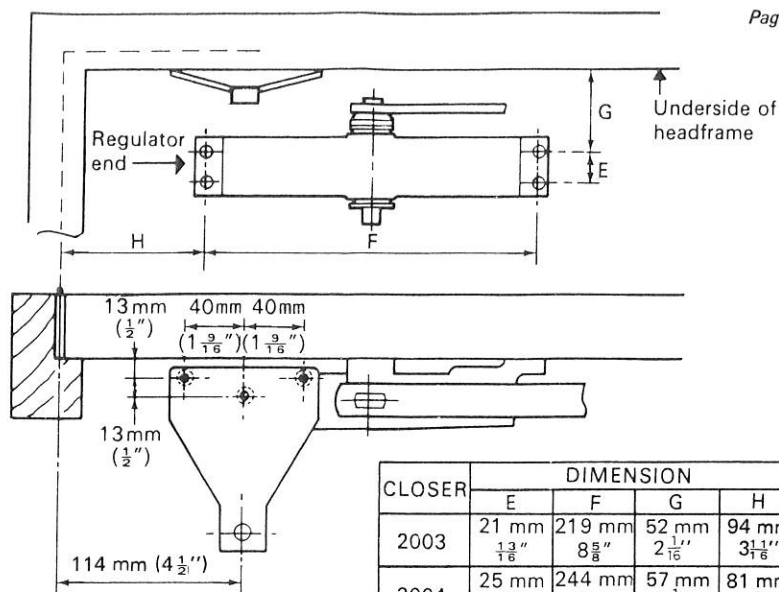


Diagram 11

To attach secondary arm to arm bracket and link arm to 999 unit.

Pull secondary arm into arm bracket, insert arm bracket pin and secure with starlock washer.

See inset in Diagram 12

Ensure that the slide block is fitted over the slide pin.

Fit link arm to slide pin and secure with washer and circlip.

See insets in Diagram 12

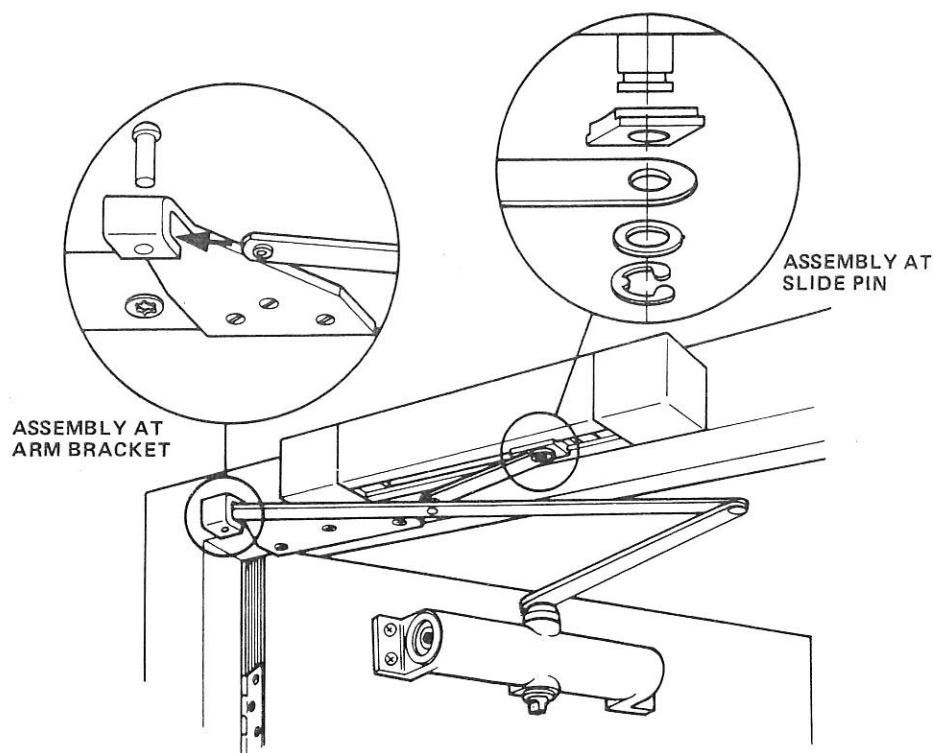


Diagram 12

Remove door wedge.
Open and close door to check that arm assembly moves freely and that the door closes easily.

To regulate closer turn centre screw clockwise for slower door closing speed or anti-clockwise for faster door closing speed.

See Diagram 13(a)

To obtain latch action, turn outer ring until offset slot is vertical and nearest the door face.

See Diagram 13(b)

Variation of latching distance can be achieved by slight alteration to the initial latch action setting.

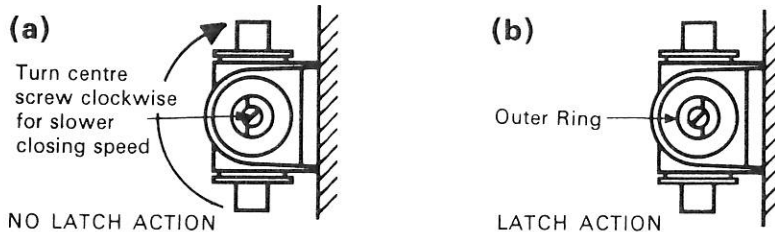


Diagram 13

Place cover over closer body and secure with a retaining screw at each end.
Press spindle cover into place.

See Diagram 14

Pass electrical installation notes on to builders site agent.

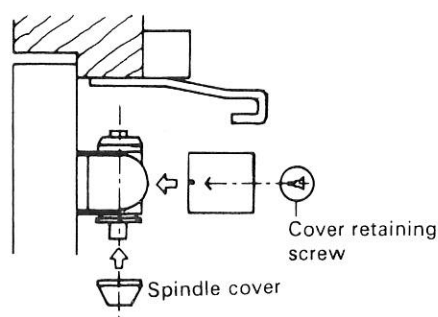


Diagram 14

ELECTRICAL INSTALLATION

BRITON 999 FIRE STAY

24V. DC



Before making connections ensure that the supply voltage is consistent with the voltage indicated on the label fixed to the connector block.

See Diagram 2

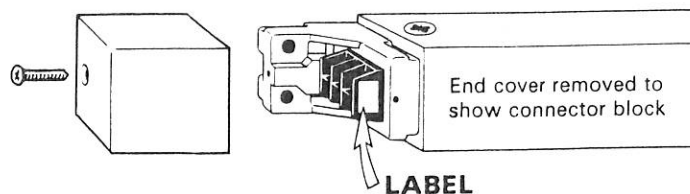


Diagram 2

SPECIFICATION

Holding type magnet LM4.
Windings epoxy resin impregnated and encapsulated.
Continuously rated.
Voltage 24V d.c. Nominal, 30V d.c. Maximum.
Power input 1.7 watts } Maximum Requirement
Current 71 mA } at 24V d.c.

WIRING

For concealed wiring, gain access from rear of fire stay.

For surface wiring, knock-out panels are provided in end cover.

Note: End cover drilled to order when connecting to pyrotechnic cable, see Drg. No. A2509.

FUNCTION

When energised, the electro magnet will retain the door in a "hold open" position against the door closer spring power.

De-energising the electro magnet by switching off or failure of electric supply allows the door to close by the door closer spring power.

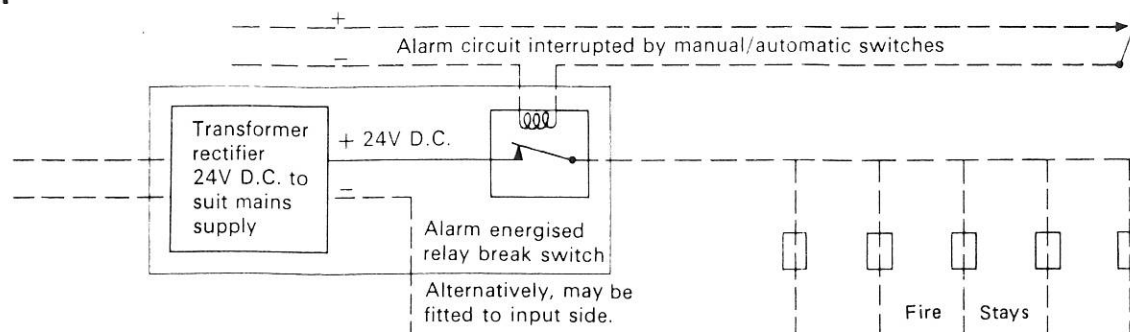
TESTING

After installation, make a check on the voltage at each Fire stay to confirm that the voltage is constant between 22V and 30V.

It is important that the equipment is tested when first installed for correct function and thereafter, at weekly intervals in accordance with the Fire Precautions Act 1971, Fire Certificate schedule 2.

Results of the tests should be recorded. This is based on recommendations contained in Home Office fire circular 29/1973.

TYPICAL WIRING DIAGRAM



AN EARTHING TERMINAL IS PROVIDED FOR USE BY THE INSTALLER.