

INSTALLATION INSTRUCTIONS

Temporarily fix body of panic bolt or latch according to appropriate installation instructions.

Remove and mark off position for spindle hole.

See Diagram 3

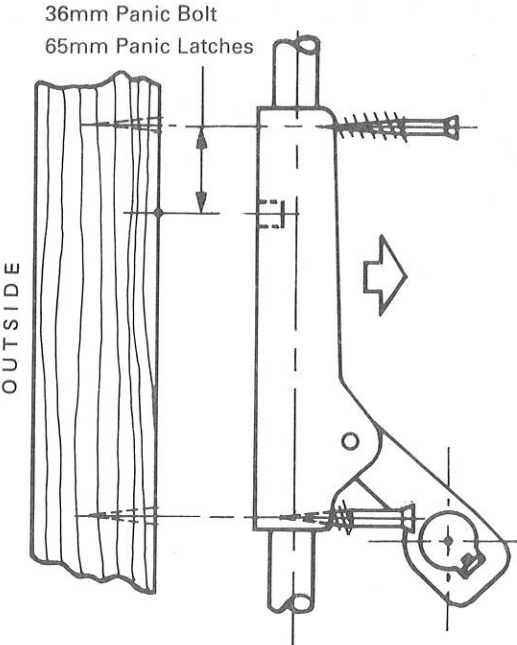


Diagram 3

With knob of the attachment disengaged, insert spindle into square hole. Secure locking attachment to outside face of door with screws and cupwashers.

See Diagram 6

Note: Bottom fixing screw should be covered over with wooden pellet.

See Diagram 7

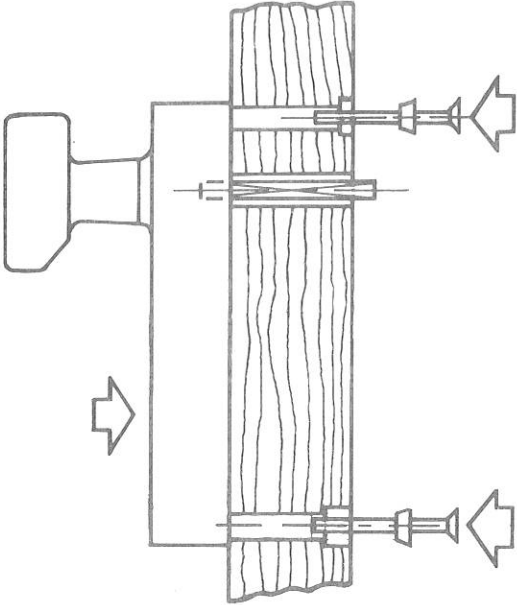


Diagram 6

Mark off positions for screwholes. Drill clearance hole for spindle. Drill and counterbore holes for fixing screws, relative to spindle hole.

See Diagram 4

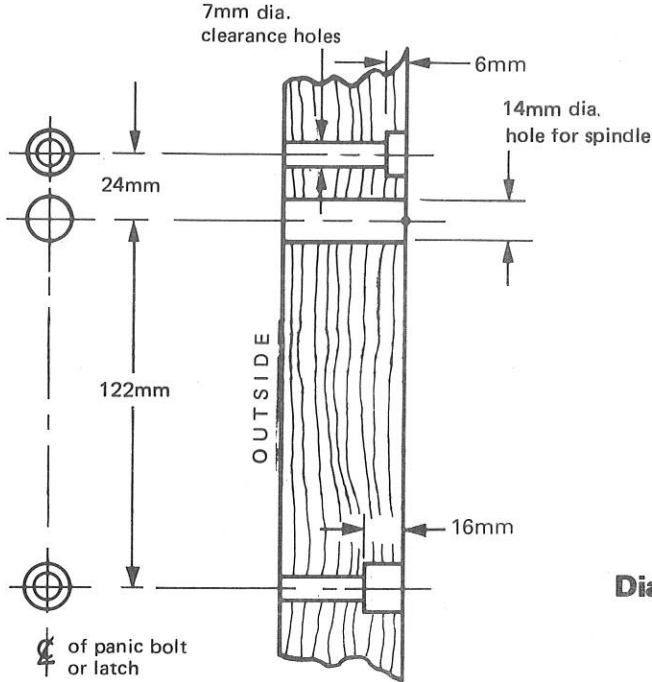


Diagram 4

Locate panic bolt or latch body onto spindle and fix to door with screws provided.

See Diagram 7

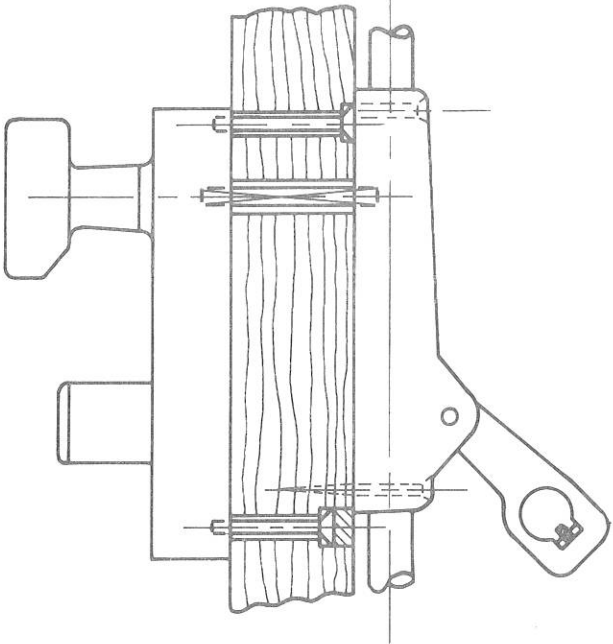


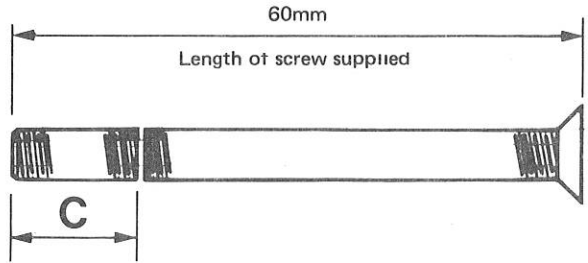
Diagram 7

Determine whether fixing screws require to be cut down in length.

See Diagram 5

Note: Length of screws are based on door thicknesses shown opposite.

Screw lengths will need altering further if door thickness is outside stated range shown.



Suitable Door Thickness	Cut down length C	
	Upper screw	Lower screw
48mm to 54mm	NIL	10mm

Diagram 5

Turn key and test action of locking attachment. i.e. Turning knob withdraws shoots of panic bolt or latch bolt of panic latch.

Complete fixing of panic bolt or latch to appropriate installation instructions.